



BAKIN

Agriculture Products Industry and Trade Ltd. Company



www.bakintarim.com.tr



A good blend of poultry probiotics...





About Us,

As a result of veterinary profession and the accumulation of field data which transformed into experience, Bakin Agriculture is founded for the purpose of being more beneficial to livestock industry, responding the needs and finding new and permanent solutions to the problems. In our corporate structure, which has been growing day by day with the expert and experienced veterinarian and agricultural engineer staff, our efforts are continuing for generating new and permanent solutions to current problems with R&D activities.

While we keep working to increase our export share, our products have already taken place in not only in the domestic market but also in the foreign market. In accordance with those efforts, we wish to make lucrative, healthy and quality production together...

Mission,

Bakin Agriculture, founded for the purpose of being more beneficial to livestock industry, responding the needs and finding new and permanent solutions to the problems, has committed to produce in accordance with international standards without compromising on quality. While our efforts are continuing both in the domestic market and foreign market, our mission is to provide solutions to industry problems with different proposals based on R&D activities.

Vision

To improve itself constantly with inquisitive and innovative approach, adopt a principle to deliver products and services without compromising on quality and in accordance with international standards, have experts and skilled employees in their field, and make a difference in the industry by having a brand value that comes to mind first in its field in Turkey and in the world.

Ali BAKIN



OUR PRODUCT RANGE

FEED ADDITIVE GROUP

BROILER VITAMIN MINERAL PREMIX
LAYING CHICKEN (0-6 WEEKS) VITAMIN MINERAL PREMIX
PULLET (7-20 WEEKS) VITAMIN MINERAL PREMIX
LAYING HEN VITAMIN MINERAL PREMIX
SMARTCID 300P
SMARTFIT 500G
SMARTSAL 400F
SMARTSHELL
SMARTTOX 800S
SMARTZYME (A GOOD MIX OF MULTI-ENZYMES)
FATLING VITAMIN-MINERAL PREMIX
MILK VITAMIN-MINERAL PREMIX
LAMB and CALF VITAMIN-MINERAL PREMIX

CONCENTRATED FEED GROUP

LAYER CONCENTRATED FEED (%30)
LAYER CHICKEN CONCENTRATED FEED (%30)
BROILER CONCENTRATED FEED (%30)
BROILER BREEDER CONCENTRATED FEED (%30)



COMPLEX PREMIXES

COMPLEX PREMIX-BROILER
COMPLEX PREMIX LAYER
COMPLEX PREMIX-LAYER BREEDER
COMPLEX PREMIX-LAYER CHICKEN
COMPLEX PREMIX-BROILER BREEDER



R&D PRODUCTS

SMART ProLive LAYER
SMART ProLive BROILER
SMART ProLive BREEDER
SMART ProLive
SMART ProLive PREMIX
SMART VitaPlus
SMART RED and SMART YELLOW
SMART ProLive RUMINANT



FEED ADDITIVE GROUP



BROILER VITAMIN MINERAL PREMIX

SMART Vitamin Mineral Premix for Broiler Chick and Broiler Feed

Vitamin A	12.000.000 IU	Folic Acid	1.000 mg
Vitamin D3	2.000.000 IU	Choline Chloride	350.000 mg
Vitamin E	40.000 mg	Manganese	80.000 mg
Vitamin K3	5.000 mg	Iron	40.000 mg
Vitamin B1	3.000 mg	Zinc	60.000 mg
Vitamin B2	7.000 mg	Copper	5.000 mg
Vitamin B6	5.000 mg	Iodine	900 mg
Vitamin B12	25 mg	Cobalt	200 mg
Niacin	40.000 mg	Selenium	200 mg
Ca-D-Pantothenate	10.000 mg	Antioxidant	10.000 mg
D-Biotin	70 mg		

LAYING CHICKEN (0-6 WEEKS)VITAMIN MINERAL PREMIX

SMART Vitamin Mineral Premix for Laying Chicken (0-6 Weeks) Feed

VITAMIN A	15.000.000 IU	FOLIC ACID	1.000 mg
VITAMIN D3	2.400.000 IU	CHOLINE CHLORIDE	400.000 mg
VITAMIN E	30.000 mg	MANGANESE	80.000 mg
VITAMIN K3	5.000 mg	IRON	60.000 mg
VITAMIN B1	3.000 mg	ZINC	60.000 mg
VITAMIN B2	8.000 mg	COPPER	5.000 mg
VITAMIN B6	5.000 mg	IODINE	1.000 mg
VITAMIN B12	20 mg	COBALT	200 mg
NIACIN	25.000 mg	SELENIUM	150 mg
Ca-D-Pantothenate	12.000 mg	ANTIOXIDANT	10.000 mg
D-BIOTIN	50 mg		



USAGE: 2,5 Kg is added to each ton layer chicken feed.

PACKAGING: 25 kg in craft bags.

STORAGE: It should be stored in cool, dry and dark environments.



PULLET (7-20 WEEKS) VITAMIN MINERAL PREMIX

SMART Vitamin Mineral Premix for Pullet (7-20 Weeks) Feed

VITAMIN A	10.000.000 IU	FOLIC ACID	750 mg
VITAMIN D3	1.500.000 IU	CHOLINE CHLORIDE	300.000 mg
VITAMIN E	20.000 mg	MANGANESE	80.000 mg
VITAMIN K3	3.000 mg	IRON	60.000 mg
VITAMIN B1	2.000 mg	ZINC	60.000 mg
VITAMIN B2	6.000 mg	COPPER	5.000 mg
VITAMIN B6	4.000 mg	IODINE	1.000 mg
VITAMIN B12	20 mg	COBALT	200 mg
NIACIN	25.000 mg	SELENIUM	150 mg
Ca-D-Pantothenate	8.000 mg	ANTIOXIDANT	10.000 mg
D-BIOTIN	80 mg		

LAYING HEN VITAMIN MINERAL PREMIX

SMART Vitamin Mineral Premix for Laying Hen Feed

VITAMIN A	12.000.000 IU	FOLIC ACID	1.000 mg
VITAMIN D3	2.500.000 IU	CHOLINE CHLORIDE	200.000 mg
VITAMIN E	30.000 mg	CANTHAXANTHIN	İSTEĞE GÖRE
VITAMIN K3	4.000 mg	APO CAROTEONIC ACID ESTER	İSTEĞE GÖRE
VITAMIN B1	3.000 mg	MANGANESE	80.000 mg
VITAMIN B2	7.000 mg	IRON	60.000 mg
VITAMIN B6	5.000 mg	ZINC	60.000 mg
VITAMIN B12	15 mg	COPPER	5.000 mg
VITAMIN C	50.000 mg	IODINE	1.000 mg
NIACIN	30.000 mg	COBALT	200 mg
Ca-D-PANTOTHENATE	10.000 mg	SELENIUM	150 mg
D-BIOTIN	45 mg	ANTIOXIDANT	10.000 mg

USAGE: 2,5 Kg is added to each ton layer chicken feed.

PACKAGING: 25 kg in craft bags.

STORAGE: It should be stored in cool, dry and dark environments.



SMARTCID 300 P

About Product

(STONG MOLD PREVENTIVE ORGANIC ACID COMBINATION)

Molds produce the most powerful carcinogenic toxins known in nature. These toxins accumulate in the animal body and reach to people by animal products, such as meat and eggs. Main damage is seen in humans. In fact, it reaches to people by becoming intense in time in the animal body. Mold toxin should not be reproduced in feed in order to protect people from this damage. For this, it is necessary to destroy the existing molds. Otherwise, when molds find the appropriate heat and humid, they will be reproduced in a week even if they are not seen with naked eye and harm to the animal health and consequently the human health. Thanks to advances in science and technology, organic acids are used to inactivate the molds. In this way, the possibility of minimizing the risk of mold is obtained in animals and animal products. The need of using combined organic acid is proven to inactivate the molds in the most effective way in feed.

COMPOUNDS of SMARTCID

Propionic acid	300.000 mg/Kg
Formic acid	150.000 mg/Kg
Citric acid	100.000 mg/Kg

THE PURPOSES of USAGE:

Kills molds that spread in the feed with grain and eliminates the risk of mold. Protects animal health and in particular the liver health. Provides increase in efficiency and increases farming earnings. Reduces the risk of mold toxin residues in animal food. Increases the safety in animal food and consequently in human health. It helps to ensure exports of food production criteria.

USAGE:1 KG/ TON Feed

PACKAGING:25 kg in craft bags

STORAGE:It should be stored in cool, dry and dark environments.

SHELF LIFE:18 months

SMARTFIT 500 G

About Product

Feed ingredients that have high Phytic acid content need phytase enzyme for best benefit of poultry from feed matrixes. Thus we have prepared a high quality Phytase formula. By using this formula as additive to poultry feeds will increase feed efficiency about 3.5%.

CONTENT

Enzyme from *Aspergillus oryzae* (DSM 10289) is as the encapsulated form. Thus, the enzyme activity is higher as 5 times as synonyms. 3-Phytase (EC 3.1.3.8): 500.000 FYT/Kg =100.000 mg/Kg (500 FYT or 100 mg/Kg in feed)

DOSE:1 KG/ TON Feed

PORTIONS:25 Kg in polyethylene or craft bags.

STORAGE:Keep in dry, cold and dark place for only 12 mo. before use.





SMARTSAL 400 F

SMARTSALL 400F–Feed is the main source of enteric pathogens. These pathogenic microorganisms can grow when they reached ambient humidity and temperature in feed and also in alimentary tract. To prevent enteric diseases, feed hygiene should be guaranteed. Since feed based antibiotic use has banned by EU at Jan 2006, natural antimicrobial additives has been taken into account for prevention feed safety and accordingly animal health. Organic acids blends have been approved one of the best natural antimicrobial sources of current applications. It is scientifically confirmed that multi organic acid combinations are more effective antimicrobials than the single ones. When organic acids came into contact with pathogenic bacteria in the wetted feed in the alimentary tract they act as antimicrobial agent. The degradation is net and non-reversible. Health promoting microflora of the alimentary tract is resistant to the organic acids and do not degrade while confusing microflora is degraded. This situation will promote maximum domination of the health promoting microflora. Then, gut intrinsic system became more healthy and also chicken becomes more healthy.

-Natural organic antimicrobial blend (SMARTSAL 400F) reduces risk of pathogenic alimentary diseases of chicken, increase digestive system health and feed efficiency rate. Salmonella, E. coli, Clostridia and other confusing flora are reduced to safety limits.

-Supported gut health increase gut immun response and gut-blood barrier. So, systemic diseases originated from gut abnormalities will be prevented more effectively.

-Healthy gut with SMARTSAL 400 F minimizes carriage and mortality rate, maximizes healthy poultry meat and egg.

-Feed utilisation rate is increased, manure moisture level decrease and ammonia release rate of manure is decreased when used SMARTSAL 400 F.

-Necrotic enteritis syndrome will be prevented by using SMARTSAL 400F.

-SMARTSAL 400 F is a good combination of organic acids (Formic acid, propionic acid, acetic acid, Citric acid).

DOSE:

BROILER : 0.5-2 KG/ TON Feed

LAYERS : 0.5-2 KG/ TON Feed

PARENT STOCK : 1-2 KG/ TON Feed

TURKEYS : 1-2 KG/ TON Feed

PORTIONS:

25 KG OF POLYETHYLENE BAGS.

STORAGE:

Keep dry, cold and dark place for 24 mo. until use.



SMARTSHELL

High egg yield of commercial chickens is needed to support the mineral demand for sufficient eggshell quality. This support will ensure the high yield performance with high liveability and bone strength. The needed supplementary mineral mix should be professionally formulated by taken into consideration the exact need of the each special flock.

Eggshell quality can ensure profitability about 5 to 10%. Furthermore, the cost of the additive mineral supplement is always cheap than that of eggs.

SMARTSHELL is a mix of minerals and trace minerals that needed by layers, and can effectively promote livestock health, eggshell quality and net profit.

SMARTSHELL promote good mineralized bones, strong skeletal system, low mortality, minimum cage stress, good eggshell quality, good immunity, low dirty egg rate, low tibial discondroplasia rate, low abnormal egg rate, good feed efficiency rate and weight gain.

Organic and inorganic minerals needed by chickens and turkeys are formulated in a good balance and more than a 10% rate of mean daily methabolic need. Thus safety range is included in the SMARTSHELL.

DOSE:

LAYERS	: 1 KG/ TON FEED
BROILER	: 1 KG/ TON FEED (until 30th d, 0,5 kg/TON of feed after 30 d to slaughter)
PARENT STOCK	: 1 KG/ TON FEED
TURKEYS	: 1 KG/ TON FEED

PORTIONS:

25 KG OF POLYETHYLENE BAGS.

STORAGE:

Keep dry, cold and dark place for 24 mo. until use.





SMARTTOX 800S

Mycotoxins are the most dangerous contaminants on the animal health and public health. Thus, any contamination of the feed or food at PPM level has been accepted as life threatening dose. Feeds including trace amounts of the micotoxins accumulate at the egg, meat or milk, and then can be more dangerous on the public health due to bioconcentration.

Many strict precautions are directed to prevent micotoxin contaminations. Nevertheless, it is well understood that we have to prevent the growth of the molds or use toxin binder substances in the feed matrices.

CONTENT

Toxin Binder	Micotoxin types and toxin binding capacity of SMARTTOX 800S (%)						
	AFT	ZL	T-2 Toxin	Fumonisin	DON	OCH	Citrinin
HSCAS	72-92.2	37	29	17	8	8	12
Diatome	62-85	26	-	32	-	-	-
Bentonite	98.5	28	-	26	-	-	-
Ester Glukomannan	95	66.7	33.6	67	12.6	12.5	18.4
Polivinil-Pirrolidon Like Polymers	94	-	-	-	-	-	-

DOSE:

Poultry feed : 0.5-3 Kg/TON
 Ruminant feeds : 0.5-1 Kg/TON
 Grains : 1-3 Kg/TON

PORTIONS:

25 Kg in polyethylene bags.

STORAGE:

Keep at dry place for 24 mo. until use.



SMARTZYME

SMARTZYME (A GOOD MIX OF MULTI-ENZYMES)

Poultry are monogastric animals and thus their feed should not contain more non-digestible high carbohydrates. Carbohydrates such as cellulose, lignin and glucans have some energy values, but they primarily should be cleaved to more small and digestible sugars. Digestion of such carbohydrates ensures more health promoting aids to the chicken by production of some natural gut supporting substances including free fatty acids and organic acids at distal gut. To enhance digestibility of the feed and benefit from them as energy source, a good blend and quality invitro enzymes are needed to supplement the feed matrix. By degrading undigestible fibers will not only increase energy level of the feed but also increase the whole nutrient efficiency. Thus, poultry feeds have to be supplemented not only with one type of enzyme but with a professionally combined multi enzymes for best benefit from the feed. Supplementation of multi enzymes to the feed is highly economic application for farmers.

CONTENT of SMARTZYME

Endo-1,3(4)-beta glucanase	2.350.000 IU/Kg
Endo-1.4-beta glucanase	4.000.000 IU/Kg
Alfa-Amylase	400.000 IU/Kg
Bacillolysin (protease)	450.000 IU/Kg
Endo-1.4-beta Xylanase	20.000.000 IU/Kg
3-Phytase	1.000.000 IU/Kg

* Furthermore, the product contains pectinase, hemicellulase, aminoglycosidase and pentosanase activities.

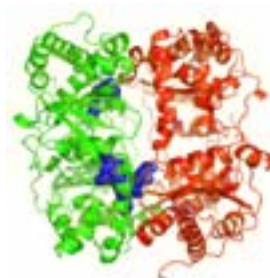
USES:

- Increase digestibility of non-digestible fibers and carbohydrates. So, increase feed efficiency ratio and energy benefit.
- Minimise the need for fat as energy source. So, decrease oxydative stress comes from fat methabolism and oxidation of the fats.
- Increase benefit from all the micro nutrients and decrease feed consumption rate.
- Decrease the cost of feed about 10%.
- Decrease needed fat (oil) suplement at a 4% rate in the feed and increase metabolizable energy level of the feed at 4-7% rate.
- Cost effective and makes save.
- Increase the FCR, decrease manure moist, and ammonia level.
- Suitable for pelettizing.

DOSE: 0.5 kg /Ton Feed

PORTIONS: 25 KG in polyethylene or craft bags.

STORAGE: Keep dry, cold and dark place for 18 mo. before use.





FATLING VITAMIN-MINERAL PREMIX

INGREDIENTS

VITAMIN A	15.000.000 IU	COPPER	10.000 mg
VITAMIN D3	3.000.000 IU	IODINE	800 mg
VITAMIN E	20.000 mg	COBALT	150 mg
MANGANESE	50.000 mg	SELENIUM	150 mg
IRON	50.000 mg	ANTIOXIDANT	10.000 mg
ZINC	50.000 mg		

MILK VITAMIN-MINERAL PREMIX

INGREDIENTS

VITAMIN A	15.000.000 IU	COPPER	10.000 mg
VITAMIN D3	3.000.000 IU	IODINE	800 mg
VITAMIN E	20.000 mg	COBALT	150 mg
MANGANESE	50.000 mg	SELENIUM	150 mg
IRON	50.000 mg	ANTIOXIDANT	10.000 mg
ZINC	50.000 mg	NIACIN	100.000 mg

LAMB and CALF VITAMIN-MINERAL PREMIX

INGREDIENTS

VITAMIN A	20.000.000 IU	Ca-D-PANTOTHENATE	12.000 mg
VITAMIN D3	3.000.000 IU	CHOLINE CHLORIDE	150.000 mg
VITAMIN E	25.000 mg	MANGANESE	50.000 mg
VITAMIN K3	8.000 mg	IRON	50.000 mg
VITAMIN B1	4.000 mg	ZINC	50.000 mg
VITAMIN B2	6.000 mg	COPPER	10.000 mg
VITAMIN B6	8.000 mg	IODINE	800 mg
VITAMIN B12	20 mg	COBALT	150 mg
NIACIN	20.000 mg	SELENIUM	150 mg
		ANTIOXIDANT	10.000 mg



USAGE: 1 Kg / TON FEED.

SHELF LIFE: 1 YEAR FROM THE DATE OF MANUFACTURE.

This is not medicine. It is a feed premix. It cannot be used for the purpose of treatment.



 **CONCENTRATED FEED GROUP**



LAYER CONCENTRATED FEED (%30)

About Product

300 Kg. of CONCENTRATED FEED from SMART+ 700 Kg of maize or wheat from Farmer= Complete Feed.

General Perspective.

The most easy and economical way for preparing the best formulated poultry feed depends on high scientific and technical assistance capacity. We offer this capacity with our concentrated feeds. This method is appeared to be the most effective way of the perfect feeding of poultry. We offer our scientific and technical capacity to the farmers for making feed formulations at most accurate rate. Before all, our technical staff should be fully informed about your flocks and stocks. After this informations, the technical staff will determine the exact nutritive demands of the poultry. Then feed matrix and content will be made. The most sensitively prepared and mixed portion of the feed formulation will be prepared as feed concentrate. This feed concentrate consists of 30 % of the whole feed. Other part of the feed consist of a total of 70% of wheat and/or maize.

Why Feed concentrate?

- You don't have to spend effort for buying about 2- to 30 different feed ingredient or additive. You only need 2 or 3 basal feed ingredients which will make 70% of the feed mix.
- You do not have to construct complex feed factory.
- You do not have to have experined feed making staff.
- You always will be assisted by our technical staff when you have feed borne problems, or else...
- Your feed formulations will be revised actually based on the poultry and flock conditions.

USAGE:

SMART FEED CONCENTRATE (300 Kg, %30) should be mixed with maize or wheat (700 KG, 70%) for making a complete feed.

PORTIONS:

50 KG of Polietilen Bags

STORAGE:

Keep in dry, cold and dark place for only 24 mo.





LAYER CHICKEN CONCENTRATED FEED (%30)

About Product

300 Kg. of CONCENTRATED FEED from SMART+ 700 Kg of maize or wheat from Farmer= Complete Feed.

General Perspective.

The most easy and economical way for preparing the best formulated poultry feed depends on high scientific and technical assistance capacity. We offer this capacity with our concentrated feeds. This method is appeared to be the most effective way of the perfect feeding of poultry. We offer our scientific and technical capacity to the farmers for making feed formulations at most accurate rate. Before all, our technical staff should be fully informed about your flocks and stocks. After this informations, the technical staff will determine the exact nutritive demands of the poultry. Then feed matrix and content will be made. The most sensitively prepared and mixed portion of the feed formulation will be prepared as feed concentrate. This feed concentrate consists of 30 % of the whole feed. Other part of the feed consist of a total of 70% of wheat and/or maize.

Why Feed concentrate?

- You don't have to spend effort for buying about 2- to 30 different feed ingredient or additive. You only need 2 or 3 basal feed ingredients which will make 70% of the feed mix.
- You do not have to construct complex feed factory.
- You do not have to have experineced feed making staff.
- You always will be assisted by our technical staff when you have feed borne problems, or else...
- Your feed formulations will be revised actually based on the poultry and flock conditions.

USAGE:

SMART FEED CONCENTRATE (300 Kg, %30) should be mixed with maize or wheat (700 KG, 70%) for making a complete feed.

PORTIONS:

50 KG of Polietilen Bags

STORAGE:

Keep in dry, cold and dark place for only 24 mo.



BROILER CONCENTRATED FEED (%30)

About Product

300 Kg. of CONCENTRATED FEED from SMART+ 700 Kg of maize or wheat from Farmer= Complete Feed.

General Perspective.

The most easy and economical way for preparing the best formulated poultry feed depends on high scientific and technical assistance capacity. We offer this capacity with our concentrated feeds. This method is appeared to be the most effective way of the perfect feeding of poultry. We offer our scientific and technical capacity to the farmers for making feed formulations at most accurate rate. Before all, our technical staff should be fully informed about your flocks and stocks. After this informations, the technical staff will determine the exact nutritive demands of the poultry. Then feed matrix and content will be made. The most sensitively prepared and mixed portion of the feed formulation will be prepared as feed concentrate. This feed concentrate consists of 30 % of the whole feed. Other part of the feed consist of a total of 70% of wheat and/or maize.

Why Feed concentrate?

- You don't have to spend effort for buying about 2- to 30 different feed ingredient or additive. You only need 2 or 3 basal feed ingredients which will make 70% of the feed mix.
- You do not have to construct complex feed factory.
- You do not have to have experineced feed making staff.
- You always will be assisted by our technical staff when you have feed borne problems, or else...
- Your feed formulations will be revised actually based on the poultry and flock conditions.

USAGE:

SMART FEED CONCENTRATE (300 Kg, %30) should be mixed with maize or wheat (700 KG, 70%) for making a complete feed.

PORTIONS:

50 KG of Polietilen Bags

STORAGE:

Keep in dry, cold and dark place for only 24 mo.



BROILER BREEDER CONCENTRATED FEED (%30)

About Product

300 Kg. of CONCENTRATED FEED from SMART+ 700 Kg of maize or wheat from Farmer= Complete Feed.

General Perspective.

The most easy and economical way for preparing the best formulated poultry feed depends on high scientific and technical assistance capacity. We offer this capacity with our concentrated feeds. This method is appeared to be the most effective way of the perfect feeding of poultry. We offer our scientific and technical capacity to the farmers for making feed formulations at most accurate rate. Before all, our technical staff should be fully informed about your flocks and stocks. After this informations, the technical staff will determine the exact nutritive demands of the poultry. Then feed matrix and content will be made. The most sensitively prepared and mixed portion of the feed formulation will be prepared as feed concentrate. This feed concentrate consists of 30 % of the whole feed. Other part of the feed consist of a total of 70% of wheat and/or maize.

Why Feed concentrate?

- You don't have to spend effort for buying about 2- to 30 different feed ingredient or additive. You only need 2 or 3 basal feed ingredients which will make 70% of the feed mix.
- You do not have to construct complex feed factory.
- You do not have to have experineced feed making staff.
- You always will be assisted by our technical staff when you have feed borne problems, or else...
- Your feed formulations will be revised actually based on the poultry and flock conditions.

USAGE:

SMART FEED CONCENTRATE (300 Kg, %30) should be mixed with maize or wheat (700 KG, 70%) for making a complete feed.

PORTIONS:

50 KG of Polietilen Bags

STORAGE:

Keep in dry, cold and dark place for only 24 mo.

A green horizontal bar containing a stylized icon of wheat stalks on the left side.

COMPLEX PREMIXES



COMPLEX PREMIX-BROILER

General Perspective.

Poultry breeding is a branch of disciplined extensive breeding. Thus, it needs intensive knowledge for preparing the feed matrix accordance to the multi-parameter indicators including, age, sex, breed, climatic conditions, etc... Our company has such experience to formulate your feed matrix by considering the special conditions that your flocks are actually exposed. The special conditions which actually effecting your flocks determines the feed demands of your poultry. Experienced technical staff should evaluate the special feed demands of your flocks. Then we have to learn the basal feed ingredients that you actually have for preparing feed. Our experienced staff will prepare your feed formula and then the formula of our complex premix which is special for only evaluated flocks. In other word, each complex premix formula will vary according to the special need for your flock and basal feed ingredients you have. All the supplementary vitamins, minerals, amino acids, growth enhancers, enzymes, natural antimicrobials, tonics and immune stimulants are included in the SMART COMPLEX PREMIXES. Each product is formulated after determining the actual demands of your flock.

ADVANTAGES

- Perfect formula for demand of feeding of your special conditioned flock that previously evaluated by our experts.
- No waste or production loss during feed preparing.
- Energy, personel and time saving for your company.
- Health promotion and profit increment.
- Our company is responsible for giving you your feed formula and matrix values.

CONTENT:

SMART COMPLEX PREMIXES have dynamic contents, and each is prepared special for your flock demand will vary from another one flock. The exact need of vitamins, minerals, amino acids, enzymes, growth enhancers, natural antimicrobials, trace elements, etc...

DOSE:

Layer : 25 Kg/TON
Parents : 25 Kg/TON
Broiler : 25 Kg/TON

PORTIONS:

25 Kg in polyethylene or craft bags.

STORAGE:

Keep in dry, cold and dark place for only 24 mo. before use.



COMPLEX PREMIX-LAYER

General Perspective.

Poultry breeding is a branch of disciplined extensive breeding. Thus, it needs intensive knowledge for preparing the feed matrix accordance to the multi-parameter indicators including, age, sex, breed, climatic conditions, etc... Our company has such experience to formulate your feed matrix by considering the special conditions that your flocks are actually exposed. The special conditions which actually effecting your flocks determines the feed demands of your poultry. Experienced technical staff should evaluate the special feed demands of your flocks. Then we have to learn the basal feed ingredients that you actually have for preparing feed. Our experienced staff will prepare your feed formula and then the formula of our complex premix which is special for only evaluated flocks. In other word, each complex premix formula will vary according to the special need for your flock and basal feed ingredients you have. All the supplementary vitamins, minerals, amino acids, growth enhancers, enzymes, natural antimicrobials, tonics and immune stimulants are included in the SMART COMPLEX PREMIXES. Each product is formulated after determining the actual demands of your flock.

ADVANTAGES

- Perfect formula for demand of feeding of your special conditioned flock that previously evaluated by our experts.
- No waste or production loss during feed preparing.
- Energy, personel and time saving for your company.
- Health promotion and profit increment.
- Our company is responsible for giving you your feed formula and matrix values.

CONTENT:

SMART COMPLEX PREMIXES have dynamic contents, and each is prepared special for your flock demand will vary from another one flock. The exact need of vitamins, minerals, amino acids, enzymes, growth enhancers, natural antimicrobials, trace elements, etc...

DOSE:

Layer : 25 Kg/TON
Parents : 25 Kg/TON
Broiler : 25 Kg/TON

PORTIONS:

25 Kg in polyethylene or craft bags.

STORAGE:

Keep in dry, cold and dark place for only 24 mo. before use.



COMPLEX PREMIX-LAYER BREEDER

General Perspective.

Poultry breeding is a branch of disciplined extensive breeding. Thus, it needs intensive knowledge for preparing the feed matrix accordance to the multi-parameter indicators including, age, sex, breed, climatic conditions, etc... Our company has such experience to formulate your feed matrix by considering the special conditions that your flocks are actually exposed. The special conditions which actually effecting your flocks determines the feed demands of your poultry. Experienced technical staff should evaluate the special feed demands of your flocks. Then we have to learn the basal feed ingredients that you actually have for preparing feed. Our experienced staff will prepare your feed formula and then the formula of our complex premix which is special for only evaluated flocks. In other word, each complex premix formula will vary according to the special need for your flock and basal feed ingredients you have. All the supplementary vitamins, minerals, amino acids, growth enhancers, enzymes, natural antimicrobials, tonics and immune stimulants are included in the SMART COMPLEX PREMIXES. Each product is formulated after determining the actual demands of your flock.

ADVANTAGES

- Perfect formula for demand of feeding of your special conditioned flock that previously evaluated by our experts.
- No waste or production loss during feed preparing.
- Energy, personel and time saving for your company.
- Health promotion and profit increment.
- Our company is responsible for giving you your feed formula and matrix values.

CONTENT:

SMART COMPLEX PREMIXES have dynamic contents, and each is prepared special for your flock demand will vary from another one flock. The exact need of vitamins, minerals, amino acids, enzymes, growth enhancers, natural antimicrobials, trace elements, etc...

DOSE:

Layer : 25 Kg/TON
Parents : 25 Kg/TON
Broiler : 25 Kg/TON

PORTIONS:

25 Kg in polyethylene or craft bags.

STORAGE:

Keep in dry, cold and dark place for only 24 mo. before use.



COMPLEX PREMIX-LAYER CHICKEN

General Perspective.

Poultry breeding is a branch of disciplined extensive breeding. Thus, it needs intensive knowledge for preparing the feed matrix accordance to the multi-parameter indicators including, age, sex, breed, climatic conditions, etc... Our company has such experience to formulate your feed matrix by considering the special conditions that your flocks are actually exposed. The special conditions which actually effecting your flocks determines the feed demands of your poultry. Experienced technical staff should evaluate the special feed demands of your flocks. Then we have to learn the basal feed ingredients that you actually have for preparing feed. Our experienced staff will prepare your feed formula and then the formula of our complex premix which is special for only evaluated flocks. In other word, each complex premix formula will vary according to the special need for your flock and basal feed ingredients you have. All the supplementary vitamins, minerals, amino acids, growth enhancers, enzymes, natural antimicrobials, tonics and immune stimulants are included in the SMART COMPLEX PREMIXES. Each product is formulated after determining the actual demands of your flock.

ADVANTAGES

- Perfect formula for demand of feeding of your special conditioned flock that previously evaluated by our experts.
- No waste or production loss during feed preparing.
- Energy, personel and time saving for your company.
- Health promotion and profit increment.
- Our company is responsible for giving you your feed formula and matrix values.

CONTENT:

SMART COMPLEX PREMIXES have dynamic contents, and each is prepared special for your flock demand will vary from another one flock. The exact need of vitamins, minerals, amino acids, enzymes, growth enhancers, natural antimicrobials, trace elements, etc...

DOSE:

Layer : 25 Kg/TON
Parents : 25 Kg/TON
Broiler : 25 Kg/TON

PORTIONS:

25 Kg in polyethylene or craft bags.

STORAGE:

Keep in dry, cold and dark place for only 24 mo. before use.



COMPLEX PREMIX-BROILER BREEDER

General Perspective.

Poultry breeding is a branch of disciplined extensive breeding. Thus, it needs intensive knowledge for preparing the feed matrix accordance to the multi-parameter indicators including, age, sex, breed, climatic conditions, etc... Our company has such experience to formulate your feed matrix by considering the special conditions that your flocks are actually exposed. The special conditions which actually effecting your flocks determines the feed demands of your poultry. Experienced technical staff should evaluate the special feed demands of your flocks. Then we have to learn the basal feed ingredients that you actually have for preparing feed. Our experienced staff will prepare your feed formula and then the formula of our complex premix which is special for only evaluated flocks. In other word, each complex premix formula will vary according to the special need for your flock and basal feed ingredients you have. All the supplementary vitamins, minerals, amino acids, growth enhancers, enzymes, natural antimicrobials, tonics and immune stimulants are included in the SMART COMPLEX PREMIXES. Each product is formulated after determining the actual demands of your flock.

ADVANTAGES

- Perfect formula for demand of feeding of your special conditioned flock that previously evaluated by our experts.
- No waste or production loss during feed preparing.
- Energy, personel and time saving for your company.
- Health promotion and profit increment.
- Our company is responsible for giving you your feed formula and matrix values.

CONTENT:

SMART COMPLEX PREMIXES have dynamic contents, and each is prepared special for your flock demand will vary from another one flock. The exact need of vitamins, minerals, amino acids, enzymes, growth enhancers, natural antimicrobials, trace elements, etc...

DOSE:

Layer : 25 Kg/TON
Parents : 25 Kg/TON
Broiler : 25 Kg/TON

PORTIONS:

25 Kg in polyethylene or craft bags.

STORAGE:

Keep in dry, cold and dark place for only 24 mo. before use.

An icon of three yellow eggs in a white egg carton, rendered in a soft, semi-transparent style.

R&D PRODUCTS



SMART PROLIVE LAYER

NATURAL INTESTINE FLORA IMPROVER (PROACTIVELY PROTECTS THE HEALTH OF YOUR CHICKENS.)

Smart ProLive, a natural product, is developed to protect the health of intestine and stomach in chickens. It supports the health of gut with the containing beneficial bacteria (*Pediococcus acidilactici*, *Lactobacillus acidophilus*) and subsidiary active substances (prebiotics, microbial peptones, other supportive microbial organic substances).

The product can be used with anticoccidials. It cannot be used with antibiotics.

Smart ProLive provides the benefits mentioned below by supporting intestinal health:

1. Increases vitality and resistance to disease.
2. Increases thruput performance.
3. Supports the protective and therapeutic applications. Reduces the incidence of diarrhea and improves feces quality.
4. Reduces poultry-house ammonia level.
5. Reduces carcass fat, and increases meat quality.
6. Reduces salmonella porter.
7. Reduces feed consumption.
8. Reduces dirty and hidden crack rate in eggs.
9. Supports the immune system.
10. Increases the effectiveness of the vaccines.

SMART ProLive CONTENT:

- Live microorganisms: The most 1×10^{10} CFU/ml
- Digestible protein: %5
- Digestible sugar: %4
- Other water soluble organic substances: %1-3

USAGE:

- Bins should be rinsed before using.
- When added to the drinking water, the water must not contain chlorine and antibiotics.
- It is given 1 Liter for 1 Ton water every day from the first day of chick for the first four weeks.
- It is given by adding 0,5 Liter into 1 Ton water for one day between four and eighteen weeks, and then two-day break is given. So, if you give on Monday then you have to wait until Thursday, and then you have to wait until Sunday. This cycle continues between 4-18 week.
- It is given by adding 0,5 Liter into 1 Ton water for one day between eighteen and one hundred twenty weeks, and then three-day break is given. So, if you give on Monday then you have to wait until Friday, and then you have to wait until Tuesday. This cycle continues between 18-120 week.
- When added to the feed, it is used by adding 0,5 lt to 1 ton feed with spraying method.

PACKAGING: Bins in 1, 5 and 20 Liter

SHELF LIFE: 6 months from the date of manufacture.

This is not medicine. It is a feed additive. It cannot be used for the purpose of treatment.





SMART PROLIVE BROILER

NATURAL INTESTINE FLORA IMPROVER (PROACTIVELY PROTECTS THE HEALTH OF YOUR CHICKENS.)

Smart ProLive, a natural product, is developed to protect the health of intestine and stomach in chickens. It supports the health of gut with the containing beneficial bacteria (*Pediococcus acidilactici*, *Lactobacillus acidophilus*) and subsidiary active substances (prebiotics, microbial peptones, other supportive microbial organic substances).

The product can be used with anticoccidials. It cannot be used with antibiotics.

Smart ProLive provides the benefits mentioned below by supporting intestinal health:

1. Increases vitality and resistance to disease.
2. Increases thruput performance.
3. Supports the protective and therapeutic applications.
4. Reduces the incidence of diarrhea and improves feces quality.
5. Reduces poultry-house ammonia level.
6. Reduces carcass fat, and increases meat quality.
7. Increases the effectiveness of the vaccines.
8. Prevents throwing raw.

SMART ProLive CONTENT:

- Live microorganisms: The most 1×10^{10} CFU/ml
- Digestible protein: %5
- Digestible sugar: %4
- Other water soluble organic substances: %1-3

USAGE:

- Bins should be rinsed before using.
- When added to the drinking water, the water must not contain chlorine and antibiotics.
- For the first 15 days, mix 1 liter of broiler for a ton of water before use.
- From day 16 to 35 mix half a liter of broiler for a ton of water.
- Between days 16 and 35 proceed mixing every other day.

PACKAGING: Bins in 1, 5 and 20 Liter

SHELF LIFE: 6 months from the date of manufacture.

This is not medicine. It is a feed additive. It cannot be used for the purpose of treatment.





SMART PROLIVE BREEDER

NATURAL INTESTINE FLORA IMPROVER (PROACTIVELY PROTECTS THE HEALTH OF YOUR CHICKENS.)

Smart ProLive, a natural product, is developed to protect the health of intestine and stomach in chickens. It supports the health of gut with the containing beneficial bacteria (*Pediococcus acidilactici*, *Lactobacillus acidophilus*) and subsidiary active substances (prebiotics, microbial peptones, other supportive microbial organic substances).

The product can be used with anticoccidials. It cannot be used with antibiotics.

Smart ProLive provides the benefits mentioned below by supporting intestinal health:

1. Increases vitality and resistance to disease.
2. Increases thrupt performance.
3. Supports the protective and therapeutic applications.
4. Reduces the incidence of diarrhea and improves feces quality.
5. Reduces poultry-house ammonia level.
6. Reduces dirty and hidden crack rate in eggs.
7. Reduces salmonella porter.
8. Reduces feed consumption.
9. Supports the immune system.
10. Increases the effectiveness of the vaccines.

SMART ProLive CONTENT:

- Live microorganisms: The most 1×10^{10} CFU/ml
- Digestible protein: %5
- Digestible sugar: %4
- Other water soluble organic substances: %1-3

USAGE:

* **Feed Usage:** For each ton feed, 0,5 lt is used by spraying.

* **Usage in Drinking Water:** It is used by adding 0,5 lt to 1 ton drinking water.

* It should be used every day throughout the life of the animal for maximum benefit.

* It can even be used with dosatron.

* Bins should be rinsed before using.

* When added to the drinking water, the water must not contain chlorine and antibiotics.

PACKAGING: Bins in 1, 5 and 20 Liter

SHELF LIFE: 6 months from the date of manufacture.

This is not medicine. It is a feed additive. It cannot be used for the purpose of treatment.





SMART PROLIVE

Smart ProLive is a product which protects the gastrointestinal health in a natural way.

INTENDED USE:

1. It is a special product for poultry.
2. Digestive system is put under maximum protection with prebiotic and enzyme supplements to probiotics.
3. Prevents problems like diarrhea, undigested feed, intestinal injury and bowel laziness.
4. It supports economic farming and food security.
5. Strengthens the immune system and increases resistance to diseases.
6. Egg yield increases and feed consumption is reduced.
7. Reduces dirty and hidden crack rate in eggs.
8. Supports the protective and therapeutic applications.
9. Reduces poultry-house ammonia level.
10. Reduces carcass fat, and increases meat quality.
11. Increases the effectiveness of the vaccines.
12. Prevents throwing raw.
13. Reduces salmonella porter.

INGREDIENTS (g/Kg):

1. **PROBIOTICS (10 g):** L. acidophilus, P. acidilactici, B. subtilis (each at least 1×10^{10} CFU/Kg). Includes adjunct and CE culture.
2. **PREBIOTICS (300 g):** Inulin (100 g), MOS (200 g),
3. **ENZYMES (In 100 g conveyer):** Xylanase (2,200.000 BXU/Kg), Cellulase (270.000 FPUi/Kg), Glucanase (100,000 FBG/Kg), Phytase (1.000.000 PPU/Kg),
4. **CONVEYER:** Oligosaccharides (590 g).

USAGE:

It is enough to give 50 g daily for 10.000 chicks and chickens. During the day, it is given for 6-8 hours by adding into the water or feed.

PACKAGING: 50 gr in 1 box * There are 20 pieces.

STORAGE: The product should be kept sealed in the original packaging in cool and dry places that do not receive sunlight.

SHELF LIFE: 12 months from the date of manufacture.

This is not medicine. It is a feed additive. It cannot be used for the purpose of treatment.





SMART PROLIVE PREMIX

Smart Prolive Premix:

1. It is a special product for poultry.
2. Digestive system is put under maximum protection with prebiotic and enzyme supplements to probiotics.
3. Prevents problems like diarrhea, undigested feed, intestinal injury and bowel laziness.
4. It supports economic farming and food security.
5. Strengthens the immune system and increases resistance to diseases.
6. Egg yield increases and feed consumption is reduced.
7. Reduces dirty and hidden crack rate in eggs.
8. Supports the protective and therapeutic applications.
9. Reduces poultry-house ammonia level.
10. Reduces carcass fat, and increases meat quality.
11. Increases the effectiveness of the vaccines.
12. Prevents throwing raw.
13. Reduces salmonella porter.

INGREDIENTS:

Probiotics:

- L. Acidophilus 1*10¹⁰ CFU/g
- P. Acidilactici 1*10¹⁰ CFU/g
- B. Subtilis 1*10¹⁰ CFU/g

Probiotics:

- Inuline 100g/kg
- MOS 200g/kg

Enzymes:

- Xylanase 2.200.000 BXU/kg
- Cellulase 270.000 FPUI/kg
- Glucanase 100.000 FBG/kg
- Phytase 1.000.000 PPU/kg

Conveyers:

- Oligosaccharides 590g/kg

USAGE: It is used by adding 500 g into 1 ton feed. 500g/ton feed.

STORAGE: The product should be kept with sealed packaging in cool and dry places that are away from direct sunlight.

PACKAGING: 25 kg in a craft bag.

SHELF LIFE: 12 months from the date of manufacture.

This is not medicine. It is a feed additive. It cannot be used for the purpose of treatment.





SMART VITAPLUS

SMART VitaPlus: Vitamin-Mineral-Aminoacid-Prebiotic

VITAMIN A	30.000.000 IU/kg	D-BIOTIN	40 mg/kg
VITAMIN D3	5.000.000 IU/kg	CHOLINE CHLORIDE	1.000 mg/kg
VITAMIN E	30.000 mg/kg	ZINC	840 mg/kg
VITAMIN K3	10.000 mg/kg	COPPER	600 mg/kg
VITAMIN C	150.000 mg/kg	SELENIUM	20 mg/kg
VITAMIN B1	20.000 mg/kg	DL-METHIONINE	20.000 mg/kg
VITAMIN B2	25.000 mg/kg	Na PROPIONATE	50.000 mg/kg
VITAMIN B6	2.000 mg/kg	Mg SULFATE	10.000 mg/kg
VITAMIN B12	10 mg/kg	NaOHCO ₃	300.000 mg/kg
FOLIC ACID	1.000 mg/kg	POTASSIUM CHLORIDE	17.400 mg/kg
NICOTINAMIDE	30.000 mg/kg	LACTOSE	282.090 mg/kg
D-PANTOTHENATE	10.000 mg/kg		

USAGE:

It is used by adding to the feed or the drinking water of poultry, ruminant and equine animals in order to meet the need of vitamin, minerals and amino acids and as a preservative. It provides a homogeneous distribution by melting very easy with the effervescent feature.

* **In poultry flocks**, it is enough to give 50 g in a day for 10 tons live weight.

* **In other animals**, the following quantities are given daily for at least 3 days:

- Up to 20 kg live weight: 1 g
- For 20-50 kg live weight: 1.5 g
- For 50-100 kg live weight: 2 g
- For 100-200 kg live weight: 3 g
- For 200 and above kg live weight: 4 g

PACKAGING: Aluminum foil packaging in 2, 4, 10, 20 and 50 g and cartoon boxes in 1 kg.

STORAGE: Keep with sealed packaging in cool and moisture free places that do not receive direct sunlight.

SHELF LIFE: 12 months from the date of manufacture.

This is not medicine. It is a feed additive. It cannot be used for the purpose of treatment.





SMART RED and SMART YELLOW

SMART RED ve SMART YELLOW (Egg yolk color stabilizers)

Egg yolk color changes with many conditions including animal origin, breeding conditions, feed matrix etc. Due to the fluctuant changes in egg yolk color, color enhancer additives are proposed to be added to the feed matrix constantly. So, consumer demand can be met easily.

SMART RED and SMART YELLOW are two different preparations and can be used at 1 Kg rate for each to have a constant yolk color. Nevertheless, the minimum needed amount from each under each of different breeding and feed based conditions have been experienced by our technical staff and we can offer the minimum needed amounts after consultation with the breeders about the live stock.

DOSE:

SMART RED : 0.5-1 Kg/TON Feed.

SMART YELLOW: 0.5-1 Kg/TON Feed.

PORTIONS AND STORAGE:

0.5, 1, 2.5, 5 and 10 Kg of carton box, keep dark, dry and cold place max. 24 mo. before use.





SMART PROLIVE RUMINANT

NATURAL GASTROINTESTINAL MICROFLORA IMPROVER (Proactively Protects Ruminant Gastrointestinal Tract)

Rumen development and microflora balance are vital for ruminants. All kinds of negativity affecting the animal will also have an adverse effect on the balance of rumen and other gastrointestinal microflora. In these cases, additional rumen support is needed. SMART PROLIVE RUMINANT has been developed by utilizing natural microflora of rumen. It will be easier to raise healthy calves if the product is used from the 3rd day of life. It is recommended to be taken with feed throughout their lives. It supports having healthy and highly productive herd thanks to included live microflora and biofermenters.

ADVANTAGES:

The benefits of SMART PROLIVE RUMINANT, a product that supports gastrointestinal health and consequently overall health, are summarized below:

Early feed transition and growth thanks to a healthy rumen development.

Reduction in food indigestion thanks to a healthy rumen activity.

Increase in throughput performance and feed efficiency.

Resistance to diseases.

Decrease in diarrhea developed depending on the use of antibiotics or disease.

Increase in stool quality, reduction in the amount.

Increase tolerance to stress situations, such as food passage, vaccination, treatment, change of location, hot and cold. Reduction in the risk of lactic acidosis.

INGREDIENTS:

SMART PROLIVE RUMINANT consists of active substances, produced by live microflora and rumen microflora, and extracted by bioprocesses.

The main ingredients:

Probiotics (1010 CFU/g): Lactobacillus casei, Pediococcus acidilactici, Enterococcus faecium, Propionibacterium freudenreichii and Saccharomyces cereviceae.

Biofermenters (%50): B. subtilis, L. acidophilus, Lactococcus lactis, actobacillus casei, Pediococcus acidilactici, Enterococcus faecium, Propionibacterium freudenreichii and Saccharomyces cereviceae, Leuconostoc mesenterium, Leuconostoc dextranicum, Bifidobacterium animalis, Megasphaera elsdenii biyoproses products.

Supportive Substances (%49): Inactive yeast (%30), Whey powder (%19).

Carrier-free.

Usage: 1 Kg SMART PROLIVE RUMINANT is added into 1 ton of every ruminant feed and it benefits from a sustained protective effect.

With the aim of supporting applications made on sudden digestive disorders, 20 g SMART PROLIVE RUMINANT is added into water 3 times a day and until achieving success.

From the third day in newborn infants, giving 10g once a day during the period of milk increases the resistance against diarrhea.

Packaging: 20 packages in 50 gr in a 1 kg box or in 25 kg craft bags

Storage: The product should be kept sealed in the original packaging in cool and dry places that do not receive sunlight.

Shelf Life: 12 months from the date of manufacture

This is not medicine. It is a feed additive. It cannot be used for the purpose of treatment.







Agriculture Products Industry and Trade Limited Company

Headquarter: Öveçler Mah. 1335. Cad. No: 64/8 Öveçler-Çankaya/ANKARA

Phone: (+90 312) 480 20 61 • Fax: (+90 312) 480 20 91

Factory: Fatih Mahallesi Turgut Özal Bulvarı No: 24 Kazan/ANKARA

Phone: (0312) 815 21 59 • Fax: 814 20 61

www.bakintarim.com.tr • info@bakintarim.com.tr